

ASHDOWN PARK



Wych Cross Forest Row East Sussex



MEETINGS, INCENTIVES AND EVENTS





186 acres to discover and explore



There's so much more than acreage to discover and explore when you arrive for your event at Ashdown Park Hotel & Country Club.

The listed 19th century mansion house has a varied and fascinating history and is encircled by a multi-faceted estate – sweeping lawns, walled and secret gardens, carp-filled lakes, golf course, woodland rustling with wild deer – all nestling in the undulating folds of the magical Ashdown Forest.

Ashdown Park has all the attractions of a remote country retreat, yet it is so easily accessible by air, rail and road and offers the rare blend of a motivational business environment with relaxing and regenerative surroundings.





The epitome of a country house hotel



Within the neo-gothic architecture of the entrance at Ashdown Park a warm welcome awaits you, with crackling open fires, comfortable lounges for a relaxing coffee or informal meeting with colleagues and discreet but attentive staff to help in any way possible.

Fulfilling every requirement of the discerning guest, each of our 106 bedrooms and suites has its own characteristics and is beautifully furnished. Named after species of trees to be found on the estate, our suites offer privacy, exclusivity and glorious views of the gardens, park and Ashdown Forest. The twelve air-conditioned Fairway Suites adjacent to the Country Club have been created with the golfer and Spa seeker in mind.

Dining in the Anderida Restaurant is truly for lovers of fine cuisine and wines. The combination of stylish decor, panoramic views of the gardens and our Executive Chef's innovative menus creates a memorable gastronomic experience.



Boardroom to banquet with ease



When planning a corporate event or personal celebration, location, ambience, flexibility and stimulating environment are all major considerations. With sixteen fully equipped suites and syndicate rooms of varying sizes, styles and functionality, Ashdown Park is a serious contender.

Grand banqueting for 150 in the impressive Richard Towneley Suite, private dining for 40 in the Jacob Henniker, exclusive use of the Robert Heath and adjoining Fairway Suites for board meetings, civil ceremonies and receptions in the Lady Brassey, or informal gatherings in the Summerhouse – all can easily be accommodated.

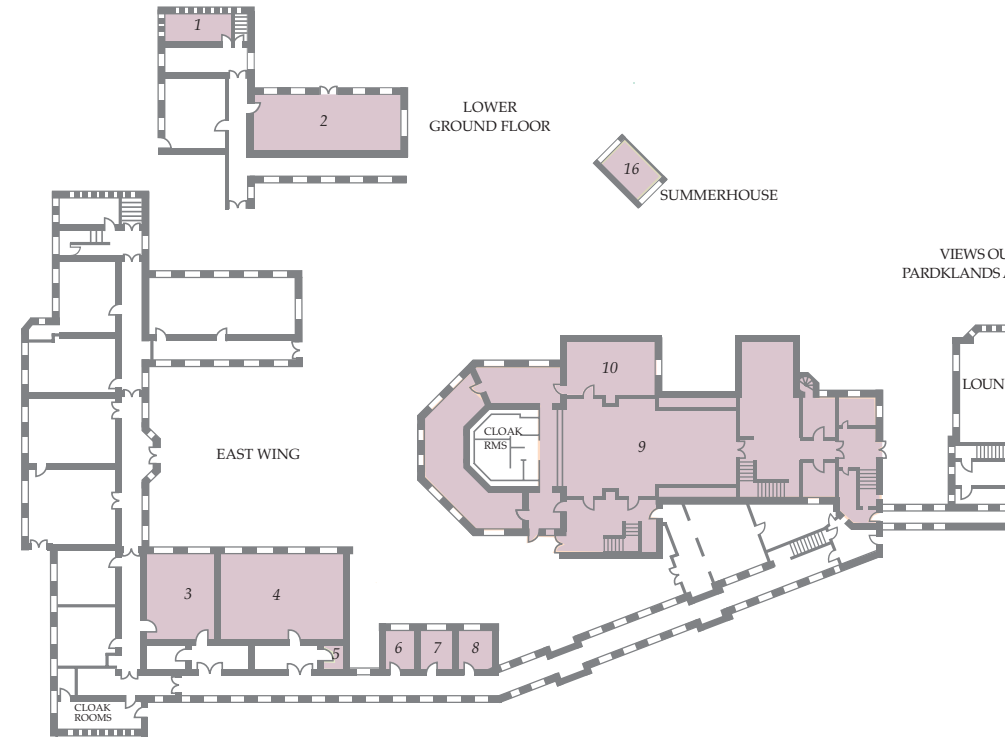


ROOM CAPACITIES

	Theatre	Classroom	Boardroom	Cabaret	U-shape	Private Dining	Reception	Fork Buffet	Wedding License
Richard Towneley Suite									
Harry Clarke	160	70	40	96	44	150	200	120	-
John Haywood	140	60	36	56	40	100	150	80	y
Geoffrey Webb	-	-	20	-	-	-	-	-	-
Geoffrey Webb Syndicate	-	-	10	-	-	-	-	-	-
Mary Towneley Lounge	-	4	10	-	-	-	70	-	-
Francis Day Office	-	-	-	-	-	-	-	-	-
Laura Stafford	40	24	20	24	16	40	50	40	-
Lady Brassey	80	45	30	48	34	80	100	80	-
Lady Brassey Office	-	-	-	-	-	-	-	-	-
Henry Smart	60	35	30	34	34	-	50	50	y
Anita Lunn	-	-	12	-	-	-	-	-	-
Thomas Bradford	-	-	8	-	-	-	-	-	-
Josiah Ranger	-	-	8	-	-	-	-	-	-
George Fisher	-	-	8	-	-	-	-	-	-
Jacob Henniker	36	24	24	24	24	40	40	40	-
Thomas Thompson	-	-	6	-	-	6	-	-	-
Richard De Wych	-	-	14	-	12	18	-	14	-
Edward Petre	-	-	6	-	-	6	-	-	-
Robert Heath	30	-	18	-	-	-	-	30	-
Summerhouse	-	-	30	-	-	150	-	-	-

Back projection available for Theatre set up in all rooms

GROUND FLOOR PLAN



1 ANITA LUNN (6.3m x 3.1m)

2 HENRY SMART (14.8m x 6.0m)

3 LAURA STAFFORD (9.33m x 6.6m)

4 LADY BRASSEY (13.11m x 9.14m)

Suite Dimensions: length x width

5 LADY BRASSEY OFFICE (3.3m x 2.79m)

6 GEORGE FISHER (4.2m x 3.1m)

7 JOSIAH RANGER (4.2m x 3.1m)

8 THOMAS BRADFORD (4.2m x 3.1m)

9 RICHARD TOWNELEY SUITE

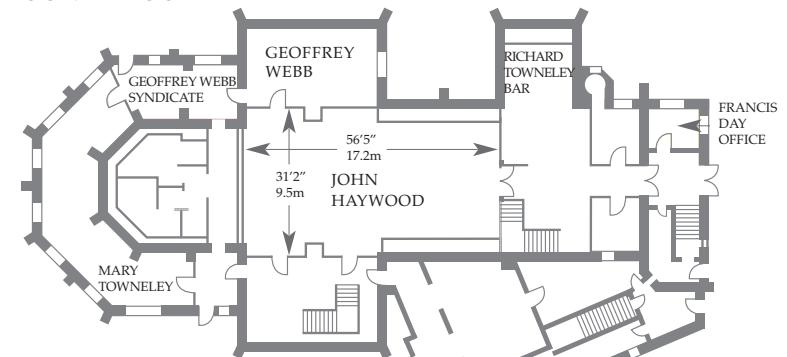
Harry Clarke (27.6m x 9.9m)

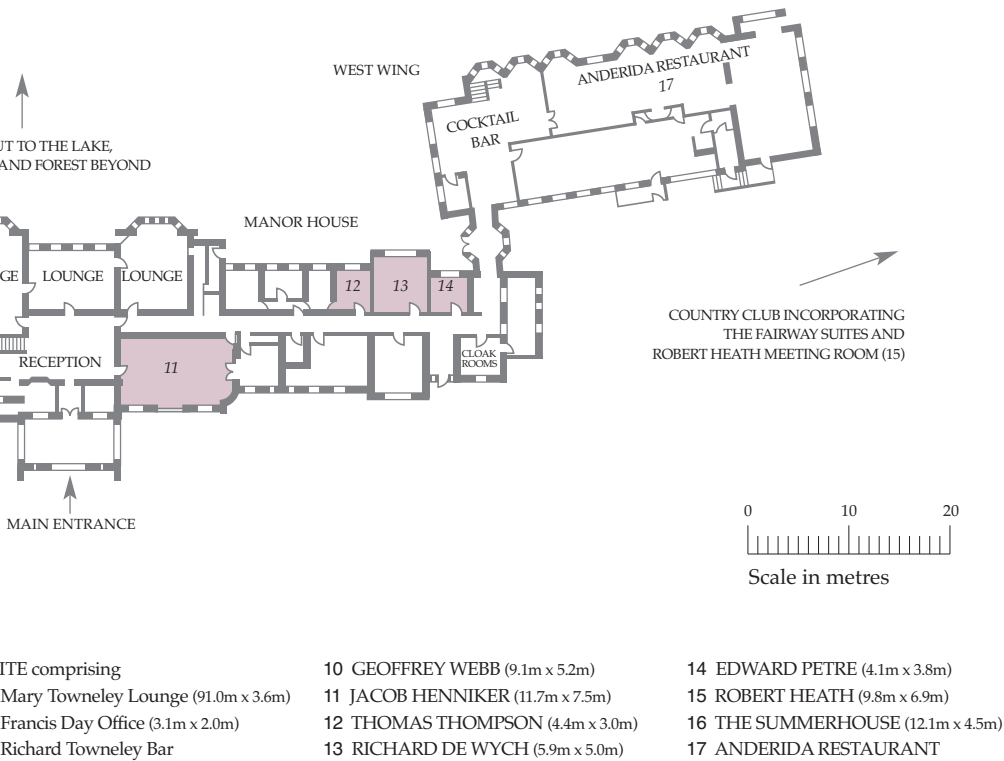
John Haywood (17.2m x 9.5m)

Geoffrey Webb (9.1m x 5.2m)

RICHARD TOWNELEY SUITE

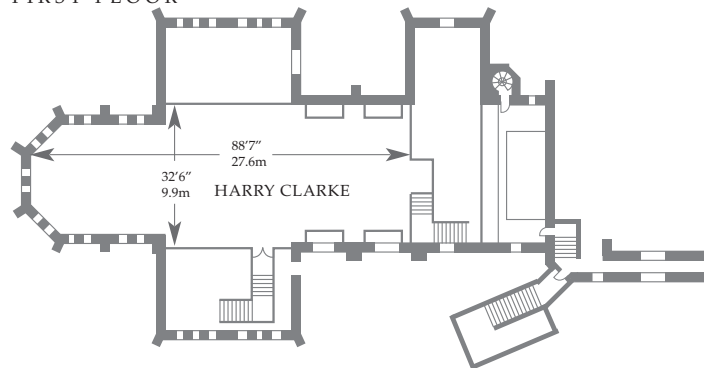
GROUND FLOOR





ITE comprising
 Mary Towneley Lounge (91.0m x 3.6m)
 Francis Day Office (3.1m x 2.0m)
 Richard Towneley Bar

FIRST FLOOR



TECHNICAL INFORMATION

	Controls in Rooms	Blackout	Natural Light	3 Phase	13 Amp Sockets	Wifi	Broadband	TV Aerial	Telephone Points	Fax Line
Richard Towneley Suite										
Harry Clarke	n	y	y	y	11	y	y	1	2	n
John Haywood	y	y	n	y	22	y	y	1	4	n
Geoffrey Webb	n	n	y	n	8	y	y	1	2	n
Geoffrey Webb Syndicate	n	y	y	n	4	y	y	-	2	n
Mary Towneley Lounge	y	y	y	n	10	y	y	1	2	n
Francis Day Office	y	y	y	n	6	y	y	-	2	y
Laura Stafford	y	y	y	n	12	y	y	1	2	n
Lady Brassey	y	y	y	n	14	y	y	1	3	n
Lady Brassey Office	y	y	n	n	4	y	y	-	2	y
Henry Smart	y	n	y	n	8	y	y	1	2	n
Anita Lunn	y	y	y	n	8	y	y	1	2	n
Thomas Bradford	y	y	y	n	4	y	y	1	2	n
Josiah Ranger	y	y	y	n	4	y	y	1	4	n
George Fisher	y	y	y	n	2	y	y	1	2	n
Jacob Henniker	y	y	y	n	12	y	y	1	2	n
Thomas Thompson	y	y	y	n	4	y	y	1	2	n
Richard De Wych	y	y	y	n	8	y	y	1	2	n
Edward Petre	y	y	y	n	4	y	y	1	2	n
Robert Heath	y	y	y	n	6	y	y	1	1	n
Summerhouse	y	n	n	n	2	n	n	-	-	n





Versatility and style for any event



Our experienced Event Co-ordinators are on hand to ensure your chosen venue is designed and equipped to meet the requirements of your occasion, the Seasonal Extra Touches are available if you wish for your morning and afternoon breaks and the Ashdown Park Experience will give your function that 'added edge'.

A host of imaginative themed evening entertainments can be organised such as a casino night, masked ball or jazz concert and if you require a complementary themed menu for your evening, our Executive Chef will be delighted to advise and create.

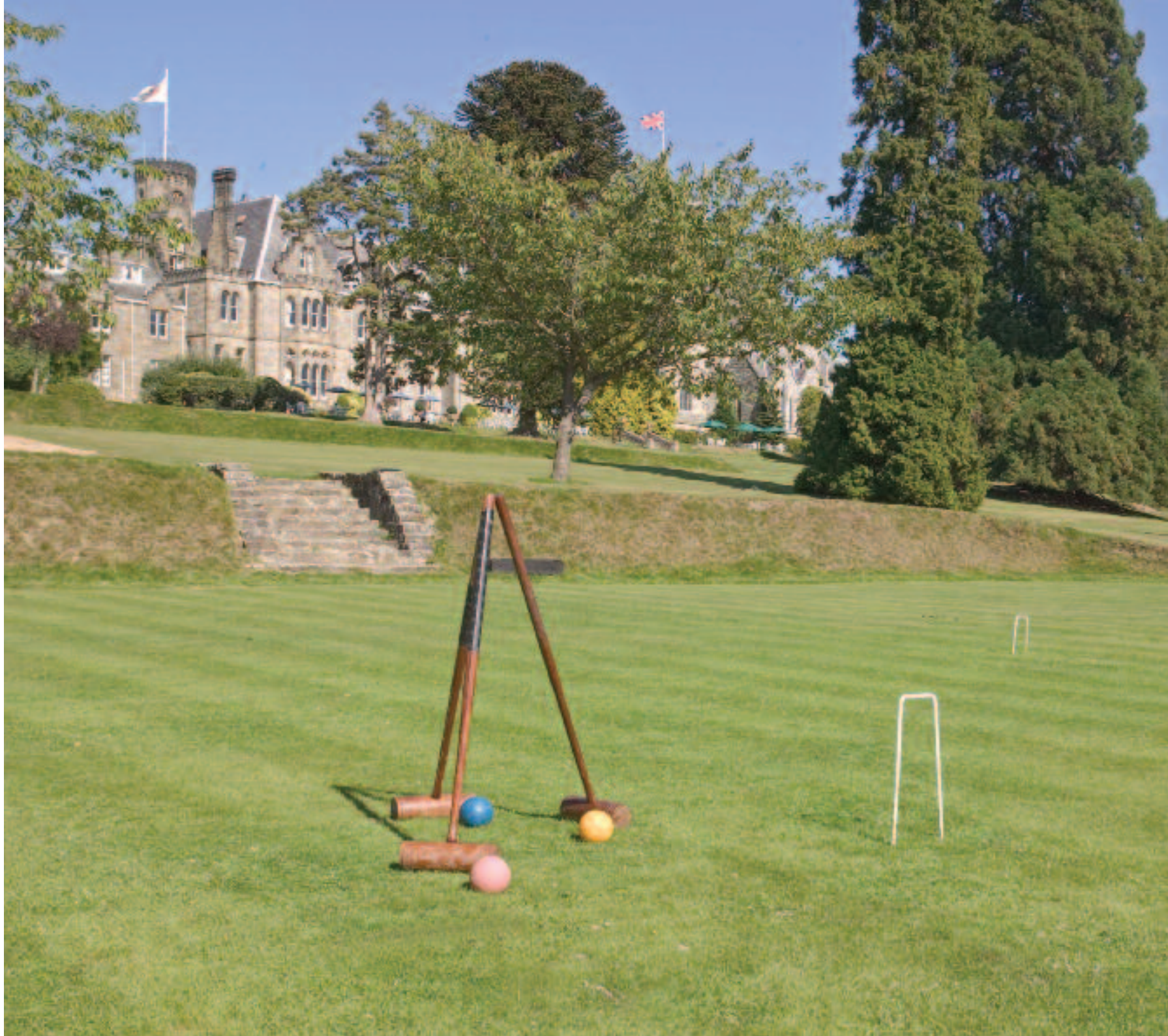
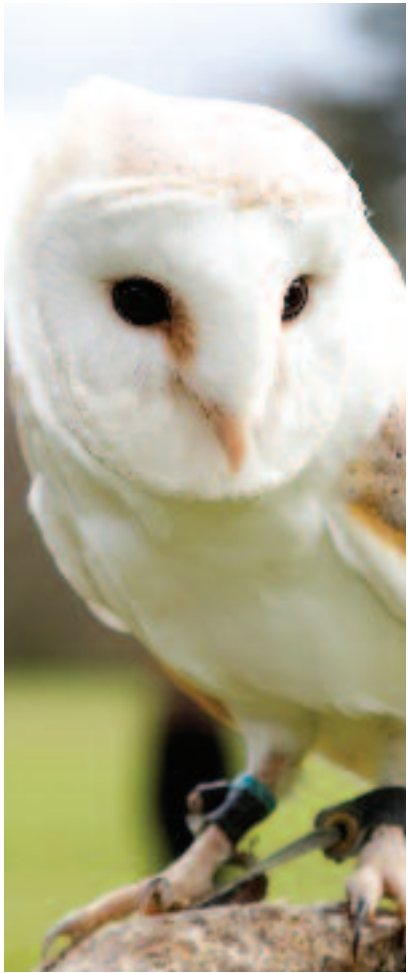


Team sports and activities



Leisure time constitutes a very important part of any residential event and should be planned to dovetail with the demands of the working day. With the woodland trails and extensive open spaces, Ashdown Park can organise a wide range of motorised and sports activities including off-road racing, archery, laser shooting, falconry, assault course contests and team building exercises.

For the golfer, Ashdown Park has a challenging par 3, 18 hole course, driving range and putting green; tuition can be arranged from an experienced coach if you wish to improve your game. To keep in trim, there are jogging trails through Bluebell Wood and the forest beyond, tennis courts and croquet lawns and if you wish to explore a little farther afield, walking maps and guides are available of the East Sussex countryside.







Energetic pursuits or pure relaxation



Our exclusive Country Club offers an impressive range of facilities for both invigorating and relaxing pursuits. If fitness is the key, there is an indoor, temperature controlled swimming pool, a well equipped gym, an air-conditioned aerobics studio, sauna and steam rooms.

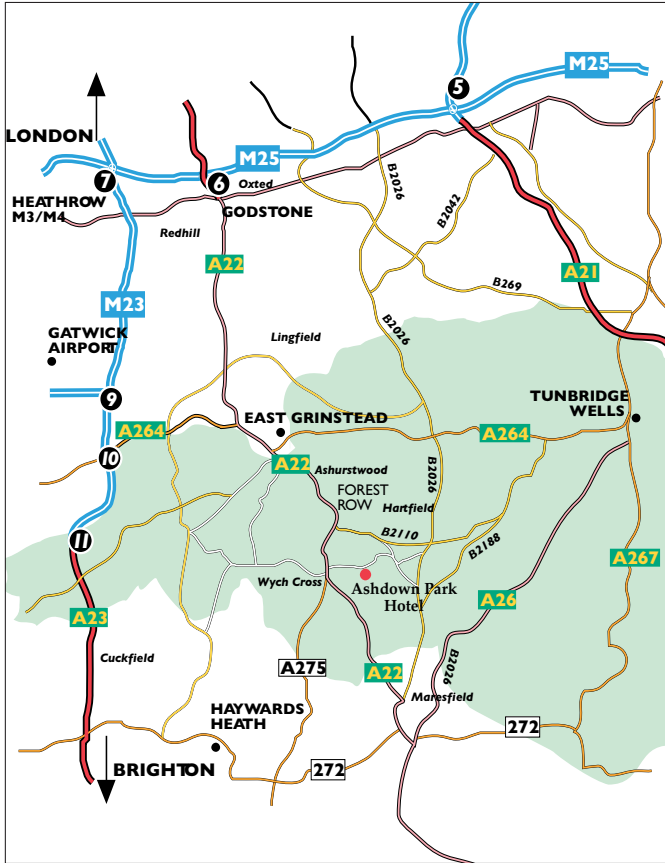
In contrast, the award-winning health and beauty spa provides a haven of relaxation after a demanding day. With a wide range of beauty treatments, including prescription facials, aromatherapy massages, body and heat applications, manicures, pedicures and alternative treatments, our professional therapists are on hand to advise which are best suited to you.

To totally relax after all this activity, informal refreshments can be enjoyed in the Fairway Lounge overlooking the golf course and woodland beyond.

ASHDOWN PARK



How to get to Ashdown Park



BY ROAD:

Route A M23 from the North. Leave at Junction 10, take A264 to East Grinstead. Take A22 towards Eastbourne passing through Forest Row. Continue on the A22 for approximately 2 miles. At Wych Cross turn left to Hartfield. Ashdown Park Hotel is situated ³/₄ mile on right hand side.

Route B A23 from the South. Leave at junction with A272. Continue along A272 until junction with A275 at Chailey. Follow A275 until it meets the A22 at Wych Cross. Left onto A22 and immediately right, signposted to Hartfield. Ashdown Park is situated ³/₄ mile on right hand side.

BY RAIL:

Gatwick Express Gatwick Station (16 miles)
To Victoria 25 mins.

Channel Tunnel (79 miles) 60 mins.

BY AIR:

Gatwick 20 mins.

Heathrow via M23/M25/M4 1 hour.

BY HELICOPTER:

Grid ref: TQ 432/322.

BY TAXI:

From hotel by prior arrangement.

CAR HIRE:

From hotel by prior arrangement.



Ashdown Park

HOTEL & COUNTRY CLUB



Wych Cross, Nr Forest Row, East Sussex, RH18 5JR
Telephone +44 (0)1342 824988 Facsimile +44 (0)1342 826206
E-mail reservations@ashdownpark.com Website www.ashdownpark.com



INVESTOR IN PEOPLE